

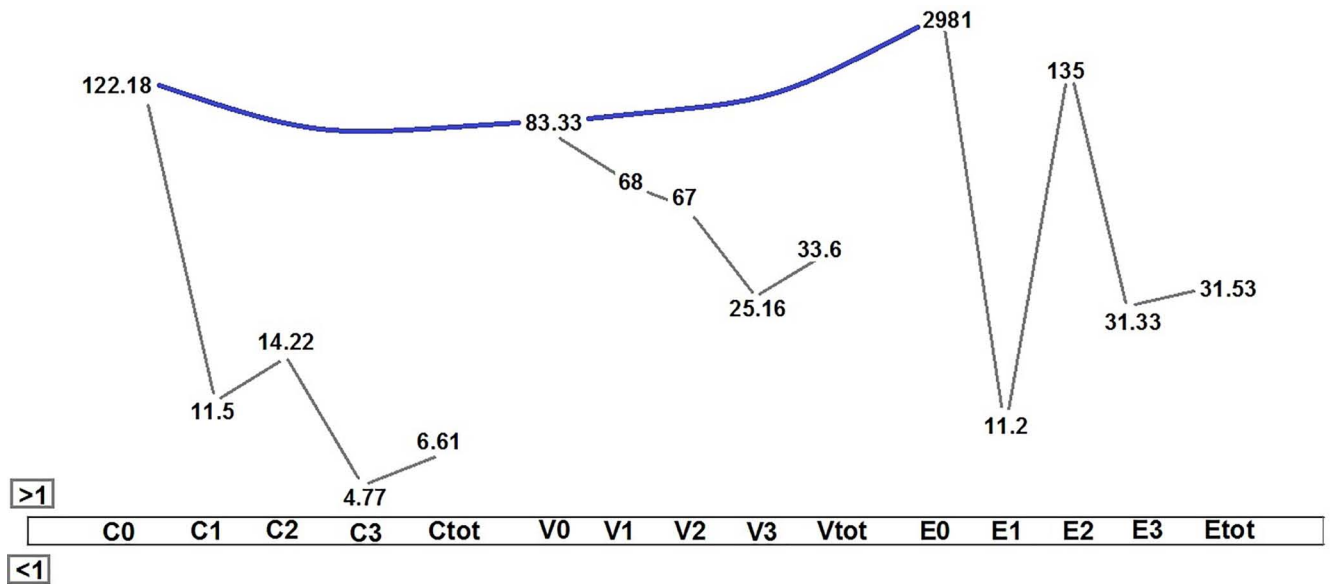
## SUPPLEMENTAL FIGURES

Proteins\ Ratio-ID	C0	C1	C2	C3	Ctot	V0	V1	V2	V3	Vtot	E0	E1	E2	E3	Etot
<b>a</b>															
1	113.81	9	13.44	5.47	6.83	80.76	23	29.5	16.16	18.4	2725	8.2	68	26	21.86
2	61.30	3.5	4.66	1.84	2.36	41.7	34	26.5	13.08	16.26	1455	6	53	16.44	15.4
3	60.87	8	9.55	2.92	4.25	44.08	34	40.5	12.0	17.33	1526	5.2	82	14.88	16.13
4	122.18	11.5	14.22	4.77	6.61	83.33	68	67	25.16	33.6	2981	11.2	135	31.33	31.53
<b>b</b>															
1	19.02	0.33	1.88	1.28	1.27	13.18	14	16	6.83	8.53	472	1	17	6	5.06
2	63.20	2.5	3.77	1.52	1.91	48.59	6	15.5	3.41	5.2	1737	1	16	3.77	3.66
3	122.40	2.66	6.66	2.41	3	84.52	27	24.5	10.41	13.4	3005	8	64	9.77	12.8

**Figure S1:** Ratio of T/CTCs for four tumor sections of patient with cerebellar meduloblastoma and three different tumor sections of peritoneal cavity.

**a:** Four patients with cerebellar meduloblastoma, **b:** three sections of peritoneal cavity, CTCs: circulated Tumor cells, C:CCL2; V:VEGF; E:EGF; C,V,E (0): absence of protein expression; C,V,E (1-3 & tot.): low-, intermediate-, high- expression and total value of expression. Circles indicate less CTCs.

CM: cerebellar meduloblastoma; PC: peritoneal cavity; **a & b:** reflect diverse intensity-based of expression in C,V, and E in samples of CM and PC respectively; Harmonic ratio for each protein is presented with quadrant boxes. **a:** Tumor cells/CTCs ratio, presents higher value in tumor cells, for T-cells of CM (sections 1-4) in the brain (**a**), and in the migratory cells (sections 1-3) in PC (**b**).

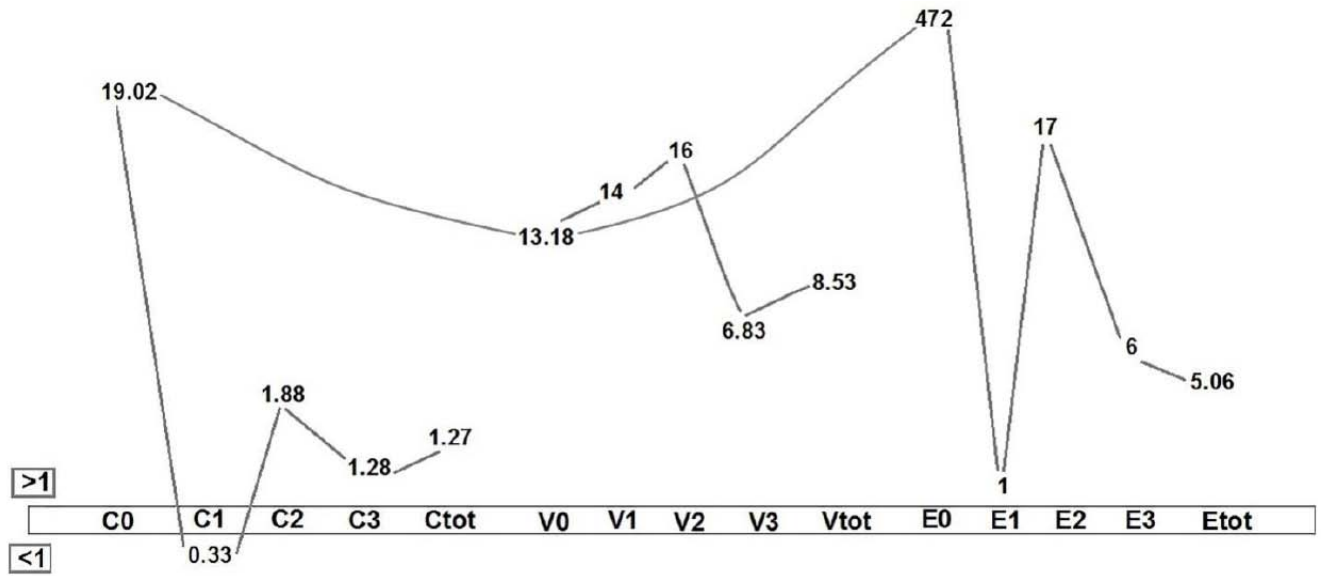


**Figure S2:** Protein expression Pulsing, based on the CCL2, VEGF and EGF ratio for section 4 of CM-tumor cells in brain to CTCs.

1: low, 2: intermediate and 3: high, tot: total-expression.

The provided values indicate the Ratio between the frequencies of tumor cells to the CTCs with different intensity of the involved proteins.

C0, and E0 indices reflects the highest ratio of Tumor/CTCs. In: >1 Indices 1-3 and total value indicate the higher frequency of tumor cells in brain than in CTCs.



**Figure S3:** Protein expression Pulsing, based on the CCL2, VEGF and EGF ratio for section 1 of brain tumor cells in peritoneal cavity to circulating tumor cells.

1: low, 2: intermediate and 3: high. C0, and E0 indices reflects the highest ratio of CTCs. The provided values indicate the Ratio between the frequencies of tumor cells to the CTCs with different intensity of the involved proteins. Indices 1-3 and total value indicate the higher frequency of tumor cells in PC than in CTCs, except for C1. <1 Ratio which is indicative of very poor prognosis.