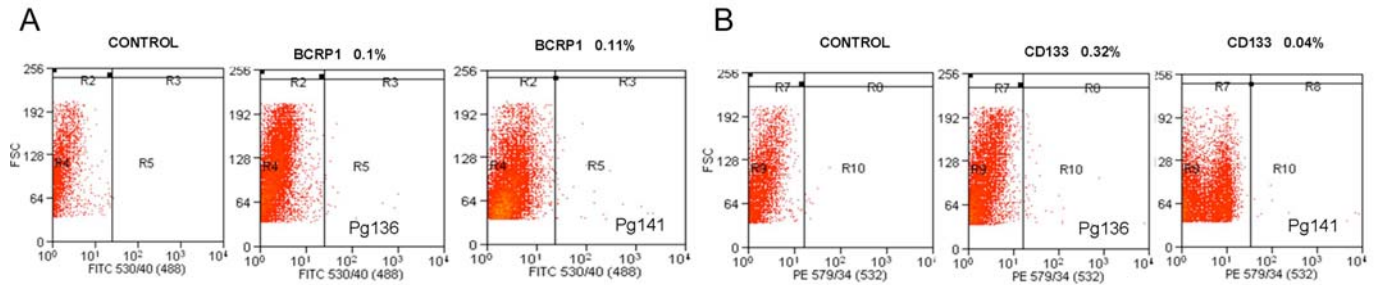
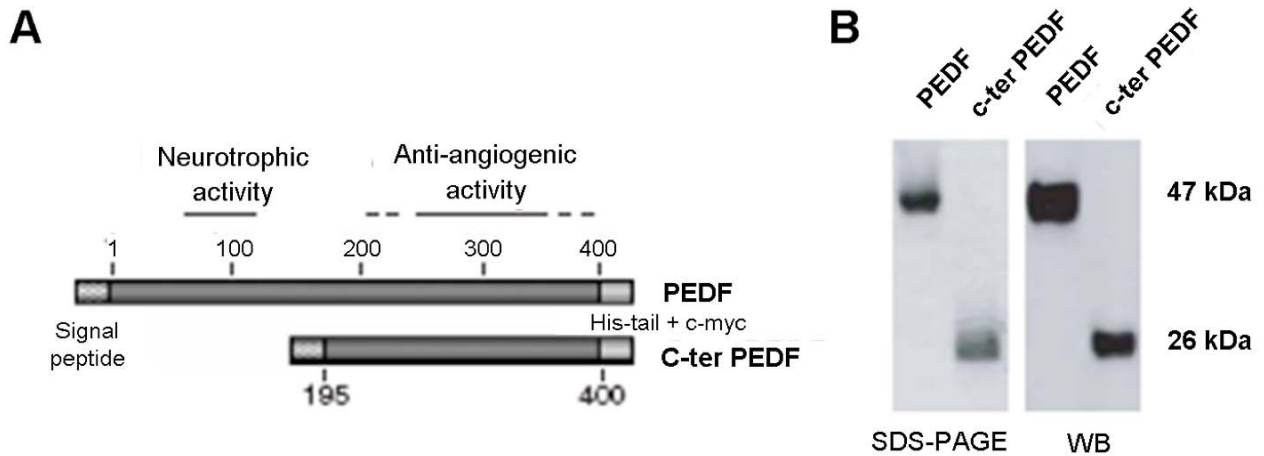


## Supplementary Data



**Figure S1: Protein Expression levels of AC133<sup>+</sup> and BCRP1<sup>+</sup> cells present in cells from patients brain tumours.** Flow cytometry analysis of BCRP1<sup>+</sup> Fig 1a, and AC133<sup>+</sup> Fig 1b, surface expression proteins in two brain tumours sample patients as preliminary results in patients. The first panels are control staining of the isotopic antibody; graphic division on the right represents positive staining for BCRP1<sup>+</sup> and AC133<sup>+</sup> association to each patient respectively. Patient Pg136, with bad prognosis present 0.1% of BCRP1 protein expression and 0.32% of AC133 expression. However, the patient Pg 141, with a good clinical prognostic, has 0.1% expression of BCRP1 protein, but 0.01% of AC133 marker expression.



**Figure S2: Scheme and gel of PEDF and c-ter constructions.** A: scheme of PEDF and c-ter transgenic proteins, with a signal peptide at the beginning and His-tail with c-myc epitope at the end, showing the neurotrophic and anti-angiogenic activity area. B: PEDF (47KDa) and c-ter PEDF (26KDa) molecules in a SDS-PAGE gel (right panel) of the His-tail chromatography purifications, and the western blot with anti-myc antibody.